

OBD *Opposed Blade Damper*

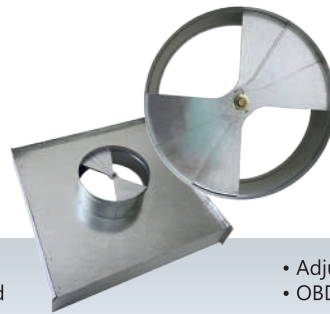




Square Blade

AL SS

- Arm operated & adjustable
- OBD are constructed of alum as standard



Fan Blade

GI SS

- Adjustable from below by screw driver
- OBD are constructed of GI as standard



Butterfly Blade

GI SS

- Arm operated & adjustable
- OBD are constructed of GI as standard



Round Collar

GI SS

- OBD are constructed of GI as standard

AL Aluminium GI Galvanised Steel SS Stainless Steel

PRODUCT DESCRIPTION

The OBD is an optional accessory (also known as rear assembly components) supplied with grilles and diffusers.

It is used for fine adjustment of air flow, for balancing the air distribution system. The design emphasis is on simplicity and durability for reliable operation.

MATERIALS

Galvanized Steel :

- Frame construction : 0.5 mm Galvanised Steel
- Blade construction : 0.5 mm Galvanised Steel

Aluminium (Square Blade) :

- Frame construction : 1.0mm aluminium extrusion
- Blade construction : 0.8mm aluminium extrusion

GENERAL FEATURES

Adjusted by :

- Adjusting arm
- Philips screw head adjustment (Optional)

SURFACE FINISHING

- Standard gray rustproof undercoat
- Matt black (upon request)